

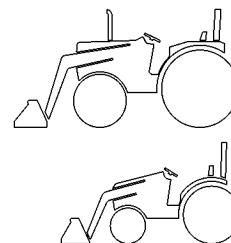
SINGLE MODEL - TRACTOR

Manual Control:

- Fine grading at a budget price
- Manual control

Standard Features:

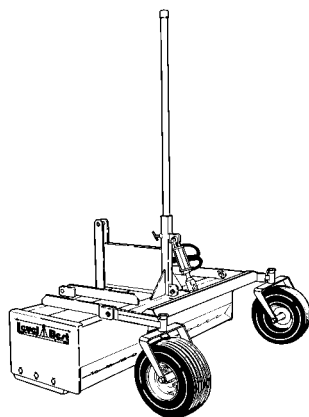
- 1-1/2" Dia. Mast Pole
- Flat-proof Tires
- Powder Coated Finish
- Reversible Cutting Edge on all sides
- Category I & II hitch



Requirements:

- Tractor-mounted power-beyond, or auxiliary hydraulic remote valve

WITH CYLINDER (DOES NOT INCLUDE HYDRAULICS & LASER CONTROL PACKAGES)

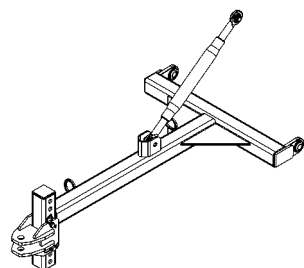


- Fine - grade finish
- Three-point hitch mount
- One cylinder controls depth

| <u>Model</u> | <u>Box Width</u> | <u>Box Capacity</u> | <u>Recommended Tractor HP</u> | <u>Shipping Weight</u> | <u>Order Code</u> |
|--------------|------------------|---------------------|-------------------------------|------------------------|-------------------|
| LBS6 | 72" | 17.0 | 30-42 | 985 lbs. | 315-004-000* |
| LBS7 | 84" | 19.9 | 35-49 | 1045 lbs. | 315-005-000* |
| LBS8 | 96" | 22.8 | 40-56 | 1105 lbs. | 315-006-000* |

* See Hydraulic and Laser Controls sections on page 5.

DRAWBAR - FACTORY INSTALLED

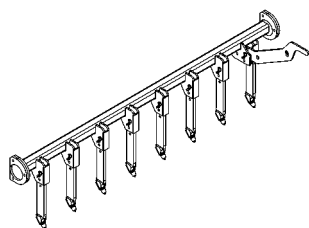


| <u>Box Width</u> | <u>Shipping Weight</u> | <u>Order Code</u> |
|------------------|------------------------|-------------------|
| 72" thru 96" | 80 lbs. | 315-549-000 |

DRAWBAR OPTION - FIELD RETROFIT, WITH WHEEL LOCKS

| <u>Box Width</u> | <u>Shipping Weight</u> | <u>Order Code</u> |
|------------------|------------------------|-------------------|
| 72" thru 96" | 100 lbs. | 315-547-000 |

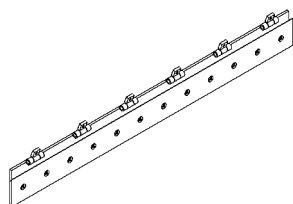
SCARIFIER BAR OPTION



| <u>Type</u> | <u>Box Width</u> | <u>Shipping Weight</u> | <u>Order Code</u> |
|-------------|------------------|------------------------|-------------------|
| Manual | 72" | 230 lbs. | 315-538-000 |
| Manual | 84" | 245 lbs. | 315-539-000 |
| Manual | 96" | 265 lbs. | 315-540-000 |

Add for Factory Installation

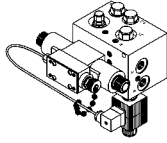
REAR HINGED CUTTING EDGE OPTION



| <u>Box Width</u> | <u>Shipping Weight</u> | <u>Order Code</u> |
|------------------|------------------------|-------------------|
| 72" | 75 lbs. | 000-190-132 |
| 84" | 80 lbs. | 000-190-133 |
| 96" | 90 lbs. | 000-190-134 |

Add for Factory Installation

ADD HYDRAULICS



Hydraulic Package:

- Digitally - Proportional Valve (Proportional for Apache)
- Hoses & Fittings
- Solenoid Cable (Laser Alignment Only)
- Hardware

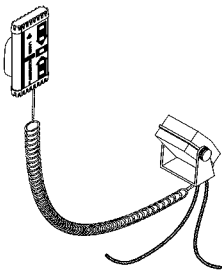
Features:

- Machine control ready
- Laser controls added easily

Hydraulics for:

| | | |
|------------------------|---------------------|-------------------|
| Laser Alignment | PT | Order Code |
| Topcon | PT | 000-166-241 |
| | Proportional | 000-166-242 |
| Trimble/Spectra | Proportional | 000-166-362 |
| Apache | Proportional | 000-166-291 |
| | Proportional | 000-166-360 |

ADD LASER ALIGNMENT CONTROLS



Laser Control Package:

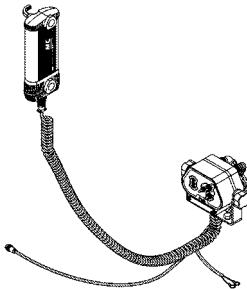
- Control Panel
- 360° Sensor
- Power Cable
- Sensor Cable

Features:

- Manual override
- Consistently "On Grade"
- More accurate and efficient

| | |
|------------------------------------|-------------------|
| | Order Code |
| Laser Alignment Controls(C) | 000-200-054 |

ADD APACHE CONTROLS



Laser Control Package:

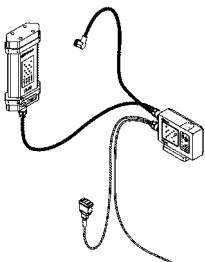
- Control Panel
- 360° Sensor
- Cable Kit (Power, Sensor, Solenoid & Remote Control)

Features:

- Manual override
- Consistently "On Grade"
- More accurate and efficient

| | |
|---------------------------|-------------------|
| | Order Code |
| Apache Controls(A) | 000-200-095 |

ADD TOPCON CONTROLS (CONTACT FACTORY FOR AVAILABILITY)



Laser Control Package:

- Control Panel
- 360° Sensor
- Cable Kit (Power, Sensor, Solenoid & Remote Control)

Features:

- Manual override
- Consistently "On Grade"
- More accurate and efficient

| | | |
|--|---------------------------|--------------|
| | Order Code | |
| Kit: Topcon Cables (Power, Sensor, Solenoid & Remote Control) | ----- | Call Factory |
| | Topcon Controls(T) | |
| | 000-200-045 | |

ADD TRIMBLE/SPECTRA CONTROLS (CONTACT FACTORY FOR AVAILABILITY)

Laser Control Package:

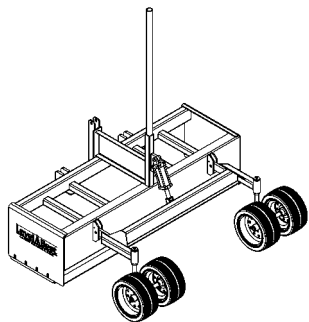
- Control Panel
- 360° Sensor
- Power Cable
- Sensor Cable

Features:

- Manual override
- Consistently "On Grade"
- More accurate and efficient

| | | |
|------------------------------------|-------------------|--------------|
| | Order Code | |
| Trimble/Spectra Controls(S) | ----- | Call Factory |

SINGLE MODEL - SUPER-CAPACITY - TRACTOR

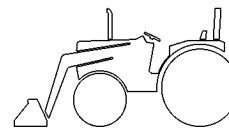


Manual Control:

- Fine grading at a budget price
- Manual control

Standard Features:

- 1-1/2" Dia. Mast Pole
- Dual-Wheel casters w/flat-proof tires
- Powder Coated Finish
- Reversible Cutting Edge on all sides
- Category I & II hitch



Requirements:

- Tractor-mounted power-beyond, or auxiliary hydraulic remote valve

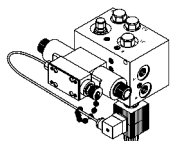
WITH CYLINDER (DOES NOT INCLUDE HYDRAULICS & LASER CONTROL PACKAGES)

- Fine - grade finish
- Three-point hitch mount
- One cylinder controls depth
- Higher & deeper box

| Model | Box Width | Box Capacity | Recommended Tractor HP | Shipping Weight | Order Code |
|--------------|------------------|---------------------|-------------------------------|------------------------|-------------------|
| LBSE7 | 84" | 32.7 | 60-80 | 1690 lbs. | 315-066-000* |
| LBSE8 | 96" | 37.5 | 70-90 | 1750 lbs. | 315-064-000* |
| LBSE9 | 108" | 42.3 | 80-100 | 1835 lbs. | 315-065-000* |

* See Hydraulic and Laser Controls sections below.

ADD HYDRAULICS



Hydraulic Package:

- Digitally - Proportional Valve
- Hoses & Fittings
- Solenoid Cable (Laser Alignment Only)
- Hardware

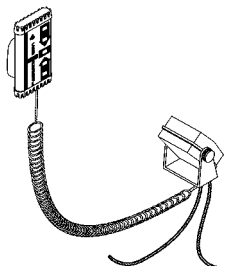
Features:

- Machine control ready
- Laser controls added easily

Hydraulics for:

| | | Order Code |
|------------------------|---------------------|-------------------|
| Laser Alignment | PT | 000-166-241 |
| Topcon | PT | 000-166-242 |
| | Proportional | 000-166-362 |
| Trimble/Spectra | Proportional | 000-166-291 |
| Apache | Proportional | 000-166-360 |

ADD LASER ALIGNMENT CONTROLS



Laser Control Package:

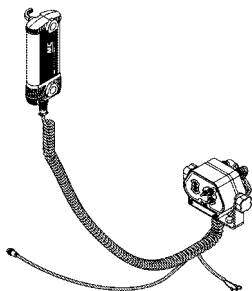
- Control Panel
- 360° Sensor
- Power Cable
- Sensor Cable

Features:

- Manual override
- Consistently "On Grade"
- More accurate and efficient

| | Order Code |
|------------------------------------|-------------------|
| Laser Alignment Controls(C) | 000-200-054 |

ADD APACHE CONTROLS



Laser Control Package:

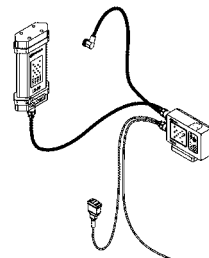
- Control Panel
- 360° Sensor
- Cable Kit (Power, Sensor, Solenoid & Remote Control)

Features:

- Manual override
- Consistently "On Grade"
- More accurate and efficient

| | Order Code |
|---------------------------|-------------------|
| Apache Controls(A) | 000-200-095 |

ADD TOPCON CONTROLS (CONTACT FACTORY FOR AVAILABILITY)



Laser Control Package:

- Control Panel
- 360° Sensor
- Cable Kit (Power, Sensor, Solenoid & Remote Control)

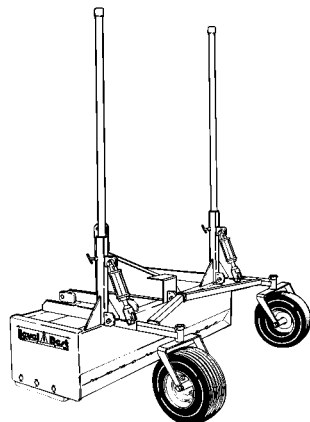
Features:

- Manual override
- Consistently "On Grade"
- More accurate and efficient

| | Order Code | |
|--|-------------------|--------------|
| Kit: Topcon Cables (Power, Sensor, Solenoid & Remote Control) | 000-200-045 | Call Factory |

ADD TRIMBLE/SPECTRA CONTROLS (CONTACT FACTORY FOR AVAILABILITY)

DOUBLE MODEL - TRACTOR

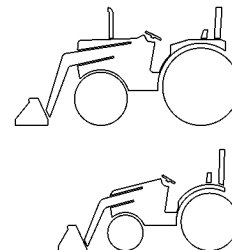


Manual Control:

- Fine grading at a budget price
- Manual control

Standard Features:

- Flat-proof Tires
- Powder Coated Finish
- Reversible Cutting Edge on all sides
- Category I & II hitch
- 1-1/2" Dia. Mast Pole Qty. 2



Requirements:

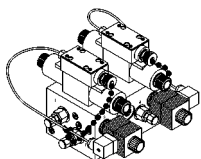
- Tractor-mounted power-beyond, or auxiliary hydraulic remote valve

| Model | Box Width | Box Capacity | Recommended Tractor HP | Shipping Weight | Order Code |
|-------|-----------|--------------|------------------------|-----------------|--------------|
| LBD6 | 72" | 17.0 | 30-42 | 1115 lbs. | 315-019-000* |
| LBD7 | 84" | 19.9 | 35-49 | 1135 lbs. | 315-020-000* |
| LBD8 | 96" | 22.8 | 40-56 | 1165 lbs. | 315-021-000* |

* See Hydraulic and Laser Controls sections below.

- Fine - grade finish
- Three-point hitch mount
- Two cylinder controls depth
- Perfect for complex slopes

ADD HYDRAULICS



Hydraulic Package:

- Digitally - Proportional Valve
- Hoses & Fittings
- Solenoid Cable Qty. 2 (Laser Alignment Only)
- Hardware

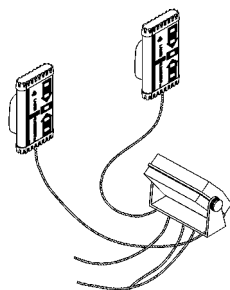
Features:

- Machine control ready
- Laser controls added easily

Hydraulics for:

| | PT | Order Code |
|-----------------|--------------|-------------|
| Laser Alignment | PT | 000-166-243 |
| Topcon | PT | 000-166-244 |
| | Proportional | 000-166-364 |
| Trimble/Spectra | Proportional | 000-166-292 |

ADD LASER ALIGNMENT CONTROLS



Laser Control Package:

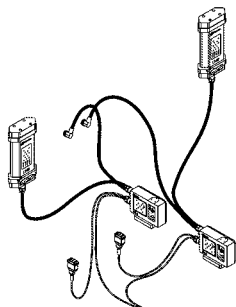
- Control Panel Qty. 1
- 360° Sensor Qty. 2
- Power Cable Qty. 1
- Sensor Cable Qty. 2

Features:

- Manual override
- Consistently "On Grade"
- More accurate and efficient

| | Order Code |
|-----------------------------|-------------|
| Laser Alignment Controls(C) | 000-200-056 |

ADD TOPCON CONTROLS (CONTACT FACTORY FOR AVAILABILITY)



Laser Control Package:

- Control Panel Qty. 2
- 360° Sensor Qty. 2
- Cable Kit (Power, Sensor, Solenoid & Remote Control)

Features:

- Manual override
- Consistently "On Grade"
- More accurate and efficient

| | Order Code | |
|--|-------------|--------------|
| Kit: Topcon Cables (Power, Sensor, Solenoid & Remote Control) Qty. 2 | 000-200-045 | Call Factory |

ADD TRIMBLE/SPECTRA CONTROLS (CONTACT FACTORY FOR AVAILABILITY)

Laser Control Package:

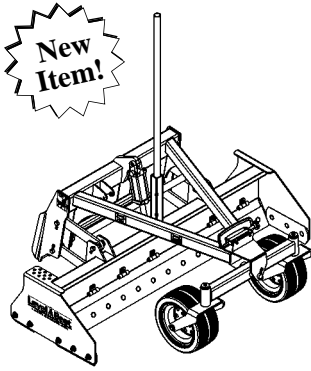
- Control Panel
- 360° Sensor
- Power Cable
- Sensor Cable

Features:

- Manual override
- Consistently "On Grade"
- More accurate and efficient

| | Order Code | |
|-----------------------------|------------|--------------|
| Trimble/Spectra Controls(S) | ----- | Call Factory |

Accessories can be found on Page 4.



- Bi-Directional Push-Pull Design
- Fine-grade finish
- Universal skid steer mount
- One cylinder controls depth

PARA-LEVEL - SKID STEER

Manual Control:

- Bi-Directional design pushes and pulls material for fine grading
- Stable platforms for fine grading
- Oscillating front axle smooths out rough ground
- Fine grading at a budget price
- Manual control

Standard Features:

- Easily updated to laser control
- Flat-proof tires
- Powder Coated Finish
- Reversible Cutting Edge on all sides
- Convex Mirror allows material visibility
- Hoses w/flush-face couplers



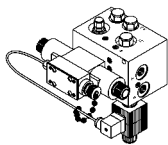
Requirements:

- Auxiliary hydraulics on skid steer

| Model | Box Width | Box Capacity | | Recommended Skid Steer HP | Shipping Weight | Order Code |
|-------|-----------|--------------|------|---------------------------|-----------------|--------------|
| | | Front | Rear | | | |
| PL72 | 72" | 11.5 | 7.0 | 42-60 | 1530 lbs. | 315-067-000* |
| PL84 | 84" | 13.4 | 8.0 | 49-70 | 1590 lbs. | 315-068-000* |
| PL96 | 96" | 15.3 | 9.0 | 56-80 | 1650 lbs. | 315-069-000* |

* See Hydraulic and Laser Controls sections below.

ADD HYDRAULICS



Hydraulic Package:

- Digitally - Proportional Valve
- Hoses & Fittings
- Solenoid Cable (Laser Alignment Only)
- Mast Pole
- Hardware

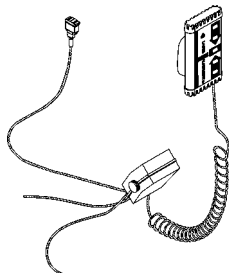
Features:

- Machine control ready
- Laser controls added easily

Hydraulics for:

| | | Order Code |
|-----------------|--------------|-------------|
| Laser Alignment | PT | 000-166-241 |
| Topcon | PT | 000-166-242 |
| | Proportional | 000-166-362 |
| Trimble/Spectra | Proportional | 000-166-291 |
| Apache | Proportional | 000-166-360 |

ADD LASER ALIGNMENT CONTROLS



Laser Control Package:

- Control Panel
- 360° Sensor
- Power Cable
- Sensor Cable
- Remote Switch for in cab grade control

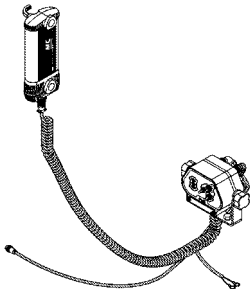
Features:

- Manual override
- Consistently "On Grade"
- More accurate and efficient

Laser Alignment Controls(C)

Order Code
000-200-055

ADD APACHE CONTROLS



Laser Control Package:

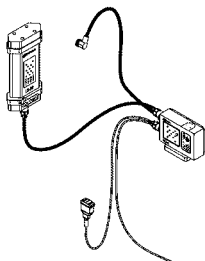
- Control Panel
- 360° Sensor
- Cable Kit (Power, Sensor, Solenoid & Remote Control)

Features:

- Manual override
- Consistently "On Grade"
- More accurate and efficient

Order Code
Apache Controls(A) 000-200-096

ADD TOPCON CONTROLS (CONTACT FACTORY FOR AVAILABILITY)



Laser Control Package:

- Control Panel
- 360° Sensor
- Cable Kit (Power, Sensor, Solenoid & Remote Control)

Features:

- Manual override
- Consistently "On Grade"
- More accurate and efficient

Order Code
Topcon Controls(T) -----
Kit: Topcon Cables (Power, Sensor, Solenoid & Remote Control) 000-200-045

Call Factory



New Holland, PA 17557
 Phone (717) 354-8721 • FAX (717) 354-2162
 1-800-342-0905
 www.preseeder.com

2005 Product List



Skid Steer Models

ADD TRIMBLE/SPECTRA CONTROLS (CONTACT FACTORY FOR AVAILABILITY)

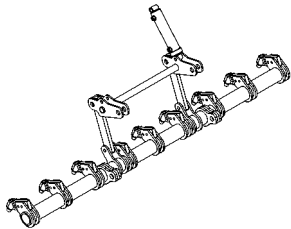
Laser Control Package:

- Control Panel
- 360° Sensor
- Power Cable
- Sensor Cable

Features:

- Manual override
- Consistently "On Grade"
- More accurate and efficient

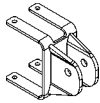
| | | |
|------------------------------------|-----------------------------------|--------------|
| Trimble/Spectra Controls(S) | <u>Order Code</u> ----- | Call Factory |
|------------------------------------|-----------------------------------|--------------|



SCARIFIER BAR OPTION

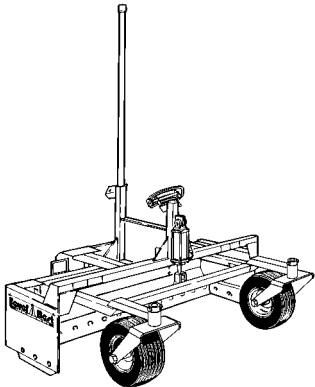
| <u>Type</u> | <u>Box Width</u> | <u>Order Code</u> | |
|--------------------|-------------------------|--------------------------|--------------|
| Hydraulic | 72" | ----- | Call Factory |
| Hydraulic | 84" | ----- | Call Factory |
| Hydraulic | 96" | ----- | Call Factory |

Add for Factory Installation



TRACTOR HITCH - Enables Para-Level box to be used with a tractor

| <u>Box Width</u> | <u>Shipping Weight</u> | <u>Order Code</u> |
|-------------------------|-------------------------------|--------------------------|
| 72" thru 96" | 7 lbs. | 315-575-000 |



- Fine-grade finish
- Universal skid steer mount
- One cylinder controls depth

SINGLE MODEL - SKID STEER

Manual Control:

- Fine grading at a budget price
- Manual control

Standard Features:

- Digitally - Proportional Valve
- Flat-proof Tires
- Powder Coated Finish
- Reversible Cutting Edge on all sides
- Convex Mirror allows material visibility
- 1-1/2" Dia. Mast Pole



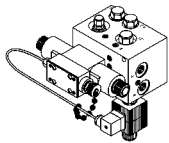
Requirements:

- Auxiliary hydraulics on skid steer

| <u>Model</u> | <u>Box Width</u> | <u>Box Capacity</u> | <u>Recommended Skid Steer HP</u> | <u>Shipping Weight</u> | <u>Order Code</u> |
|--------------|------------------|---------------------|----------------------------------|------------------------|-------------------|
| LBSS6 | 72" | 16.9 | 42-60 | 995 lbs. | 315-046-000* |
| LBSS7 | 84" | 19.7 | 49-70 | 1055 lbs. | 315-047-000* |
| LBSS8 | 96" | 22.6 | 56-80 | 1120 lbs. | 315-048-000* |

* See Hydraulic and Laser Controls sections below.

ADD HYDRAULICS



Hydraulic Package:

- Digitally - Proportional Valve
- Hoses & Fittings
- Solenoid Cable (Laser Alignment Only)
- Mast Pole
- Hardware

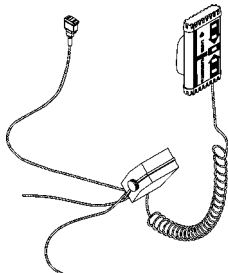
Features:

- Machine control ready
- Laser controls added easily

Hydraulics for:

| | | <u>Order Code</u> |
|-----------------|--------------|-------------------|
| Laser Alignment | PT | 000-166-241 |
| Topcon | PT | 000-166-242 |
| | Proportional | 000-166-362 |
| Trimble/Spectra | Proportional | 000-166-291 |
| Apache | Proportional | 000-166-360 |

ADD LASER ALIGNMENT CONTROLS



Laser Control Package:

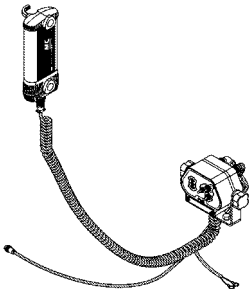
- Control Panel
- 360° Sensor
- Power Cable
- Sensor Cable
- Remote Switch for in cab grade control

Features:

- Manual override
- Consistently "On Grade"
- More accurate and efficient

| | <u>Order Code</u> |
|-----------------------------|-------------------|
| Laser Alignment Controls(C) | 000-200-055 |

ADD APACHE CONTROLS



Laser Control Package:

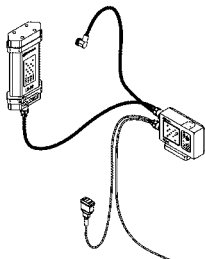
- Control Panel
- 360° Sensor
- Cable Kit (Power, Sensor, Solenoid & Remote Control)

Features:

- Manual override
- Consistently "On Grade"
- More accurate and efficient

| | <u>Order Code</u> |
|--------------------|-------------------|
| Apache Controls(A) | 000-200-096 |

ADD TOPCON CONTROLS (CONTACT FACTORY FOR AVAILABILITY)



Laser Control Package:

- Control Panel
- 360° Sensor
- Cable Kit (Power, Sensor, Solenoid & Remote Control)

Features:

- Manual override
- Consistently "On Grade"
- More accurate and efficient

| | <u>Order Code</u> | |
|---|-------------------|--------------|
| Kit: Topcon Cables (Power, Sensor, Solenoid & Remote Control) | ----- | Call Factory |
| | 000-200-045 | |